

GENERAL NOTES THIS SHEET

- A. ABOVE GRADE CONDUIT SHALL BE RIGID GALVANIZED STEEL (RGS).
- B. FLEXIBLE METAL CONDUIT SHALL BE LIQUATITE TYPE LA OR EQUAL.
- C. WIRE TYPE SHALL BE XHHW-2.
- D. CONTRACTOR SHALL SUPPLY CIRCUIT BREAKERS FOR LIGHTING PANEL.
- E. ALL LIGHTING FIXTURES SHALL BE PROVIDED BY CONTRACTOR. SEE LUMINAIRE SCHEDULE FOR FIXTURE TYPE.
- F. 120V DUPLEX RECEPTACLES SHALL BE DANIEL WOODHEAD-MOLEX CAT #130146-0131, NEMA 5-15 WET LOCATION MOUNTED ON AN FD BOX.
- G. WELDING RECEPTACLES SHALL BE A MELTRIC 480V 60A CAT#63-64063 MOUNTED ON A 30DEG POLY ANGLE WITH METAL BOX W/1" NPT CAT #713C3N10. SEE RECEPTACLES DETAILS.
- H. ALL 120V 20A CIRCUITS SHALL CONSIST OF ONE BLACK #12 HOT WIRE, ONE WHITE #12 NEUTRAL AND ONE DEDICATED GREEN #12 EQUIPMENT GROUNDING CONDUCTOR.
- I. LIGHTING CIRCUITS TO UNSWITCHED LIGHTS ON THE ROOF AND ABOVE EXTERIOR DOORS SHALL BE RUN THROUGH A PHOTOCELL.
- J. CONTRACTOR SHALL FIELD VERIFY THAT ALL FIXTURE LOCATIONS DO NOT IMPEDE EQUIPMENT AND PIPING LOCATIONS/INSTALLATIONS.

FLAG NOTES THIS SHEET

CONTRACTOR SHALL PROVIDE LABOR AND MATERIAL, UNLESS NOTED OTHERWISE, TO PERFORM THE FOLLOWING TASKS:

- 1. INSTALL TWO 120V DUPLEX RECEPTACLES AT LOCATIONS SHOWN ON THIS DRAWING. INSTALL ONE 20A 120V CIRCUIT TO THE RECEPTACLES FROM THE LIGHTING PANEL.
- 2. INSTALL TWO TYPE C WALL MOUNT LIGHT FIXTURES IN THE ROOFTOP AREA AND ONE FIXTURE IN THE STAIRWELL AT THE LOCATIONS SHOWN.
- 3. INSTALL ONE TYPE EM EMERGENCY AND ONE TYPE EEC EMERGENCY/EXIT AT THE LOCATIONS SHOWN IN THE STAIRWELL.
- 4. INSTALL 20A 120V LIGHTING CIRCUITS VIA SNAP SWITCHES TO THE ROOFTOP LIGHT FIXTURES AS SHOWN ON DRAWING FROM THE LIGHTING PANEL.
- 5. INSTALL 20A 120V LIGHTING CIRCUIT TO THE STAIRWELL LIGHT FIXTURES AS SHOWN ON DRAWING FROM THE LIGHTING PANEL.



ELECTRICAL-EVAP LIGHTING/RECEPT-ROOFTOP EL. 158'

Scale: 1/4" = 1'-0"

No.	Date	By	Revision	Ad. No.
A	2025.06.18	JM	ISSUED FOR REVIEW	

PRELIMINARY
NOT FOR
CONSTRUCTION
18 JUNE 2025

4990 Royal Gulf Cr
Fort Myers, FL 33966
Ph: 239.768.1778, Fax: 239.210.2168
www.veiglobal.com

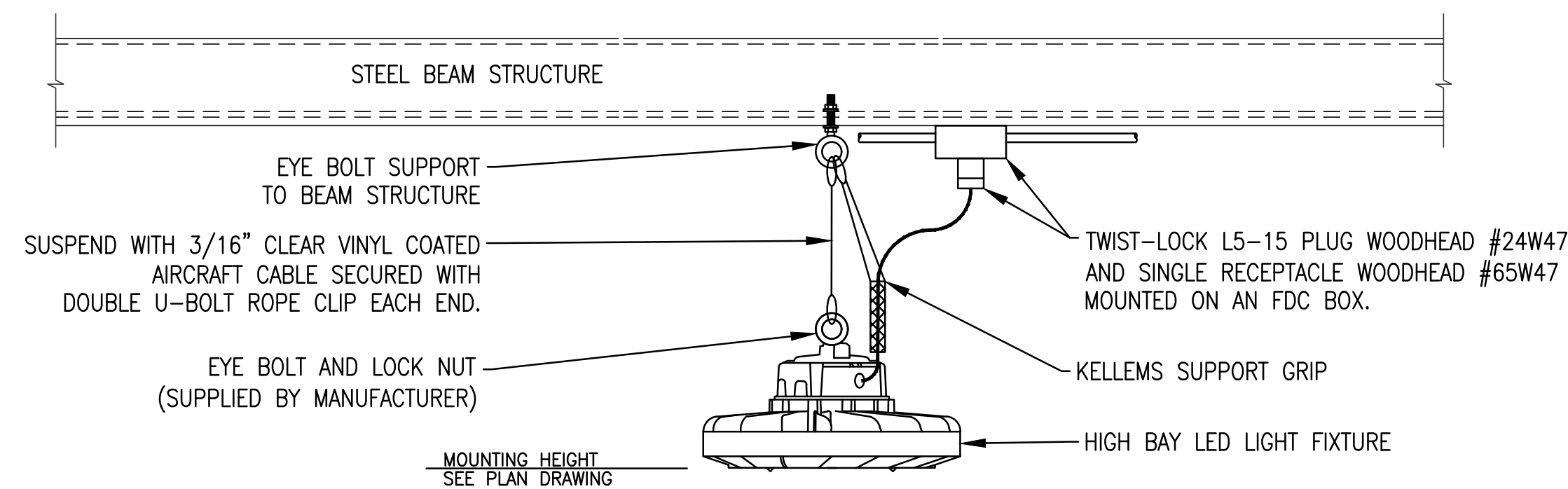
Title:
AMALGAMATED SUGAR COMPANY EVAPORATOR PROJECT
LIGHTING & RECEPTACLE PLAN
ROOF LEVEL EL. 158'-2"

Amalgamated Sugar

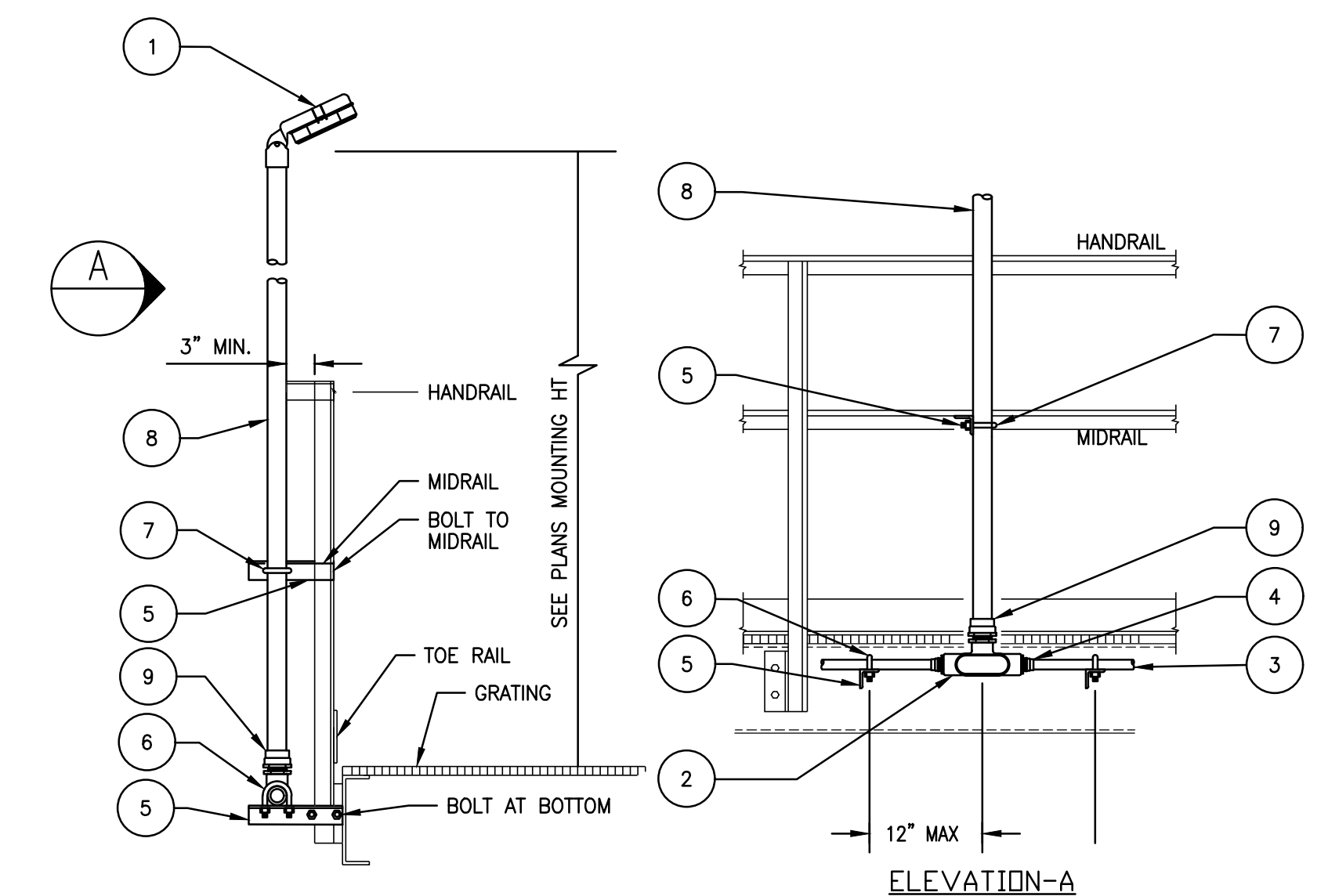
2320 ORCHARD DRIVE EAST
TWIN FALLS, ID 83301

Date: 2025.05.05	Dwg Size: 24X36
Chkd By: J.MCMURTRY	
Dsgn By: B.PENA	
Project: E24140	Revision: A
Dwg: E.22	

LUMINAIRE FIXTURE SCHEDULE										
TYPE	QUANTITY	MANUFACTURER	CATALOG NUMBER	FIXTURE DESCRIPTION	MOUNTING	LUMENS	WATTS	VOLTS	LOCATION	REMARKS
A	12	KEYSTONE LIGHTING	KT-RHLED200PS-14C8CSB-VDIM-P	HIGH BAY LED WET LOCATION	RING BOLT	24,150	150	120/277V	SEE PLANS	
B	1	ATLAS LIGHTING	CPMS3-12L	LOW PROFILE CANOPY	SURFACE	12,000	60	120/277V		
C	17	ATLAS LIGHTING	WPM-64LED	MEDIUM WALL LIGHT	SURFACE	7237	61	120/208V	SEE PLANS	
D	6	ATLAS LIGHTING	SLPS-9L-T2-5K-B	LED FLOOD LIGHT	KNUCKLE/TRUNION/ SLIPFITTER	8859	63	120/208V	SEE PLANS	USE MOUNTING FOR SPECIFIC APPLICATION
EEC	9	ATLAS LIGHTING	EECPRWR	LED EXT/EMERGENCY COMBO - RED	SURFACE		5	120/277V	SEE PLANS	
EM	2	ATLAS LIGHTING	EMO2A	LED OVAL 2 HEADED EMERGENCY	SURFSACE	43.9	5	120/277V	SEE PLANS	



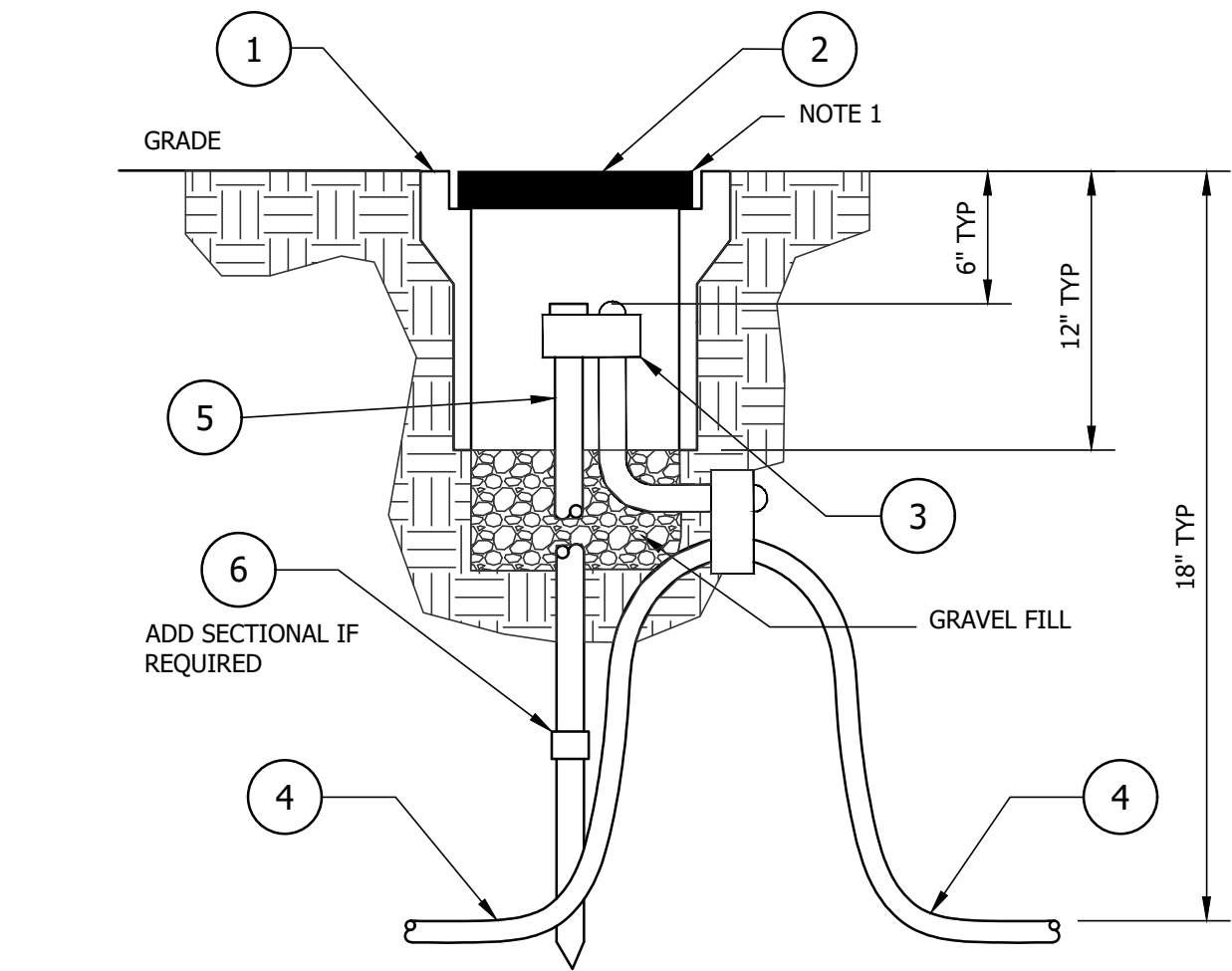
ITEM	QTY.	DESCRIPTION
1	1	LIGHT FIXTURE TYPE "LED", CANOPY MOUNT, (SEE FIXTURE SCHEDULE)
2	1	JUNCTION BOX
3		LIGHTING CONDUIT
4	4	1 5/8" CHANNEL, HOT DIPPED GALV., UNISTRUT #P1000-HG OR EQUAL (LENGTH AS REQUIRED)
5	4	1/2"-13 THREADED ROD, 316 STAINLESS STEEL (LENGTH AS REQUIRED)
6	8	FLAT PLATE FITTING, 1-5/8"x1-5/8", 1/2" BOLT HOLE, 316 SS, UNISTRUT #P1064-SS OR EQUAL
7	16	1/2" -13 HEX NUT, 316 STAINLESS STEEL
8	16	1/2" LOCKWASHER, 316 STAINLESS STEEL
9	16	1/2" FLAT WASHER, 316 STAINLESS STEEL
10	2	3/4" CONDUIT CLAMP, UNISTRUT #P1112HG OR EQUAL



ITEM	QTY.	DESCRIPTION
1	1	NEW LIGHT FIXTURE SEE LUMINAIRE SCHEDULE
2	1	1 1/2" TEE FITTING, FORM 7, CROUSE-HINDS #157 SA W/ COVER #570F SA & GASKET #GASK575 OR EQUAL
3	AS REQ'D	3/4" CONDUIT, RIGID ALL
4	2	1 1/2" x 3/4" REDUCER, CROUSE-HINDS #RES2 SA OR EQUAL
5	3	2" x 2" x 1/4" ANGLE, GALVANIZED (LENGTH AS REQUIRED)
6	2	3/4" RIGHT ANGLE CONDUIT CLAMP, CROUSE-HINDS #RAC75HD OR EQUAL
7	1	1 1/2" U-BOLT SET, CROUSE-HINDS #UBM150HD
8	10'	1 1/2" CONDUIT, RIGID ALL
9	1	1 1/2" UNION, CROUSE-HINDS #UNY505 OR EQUAL

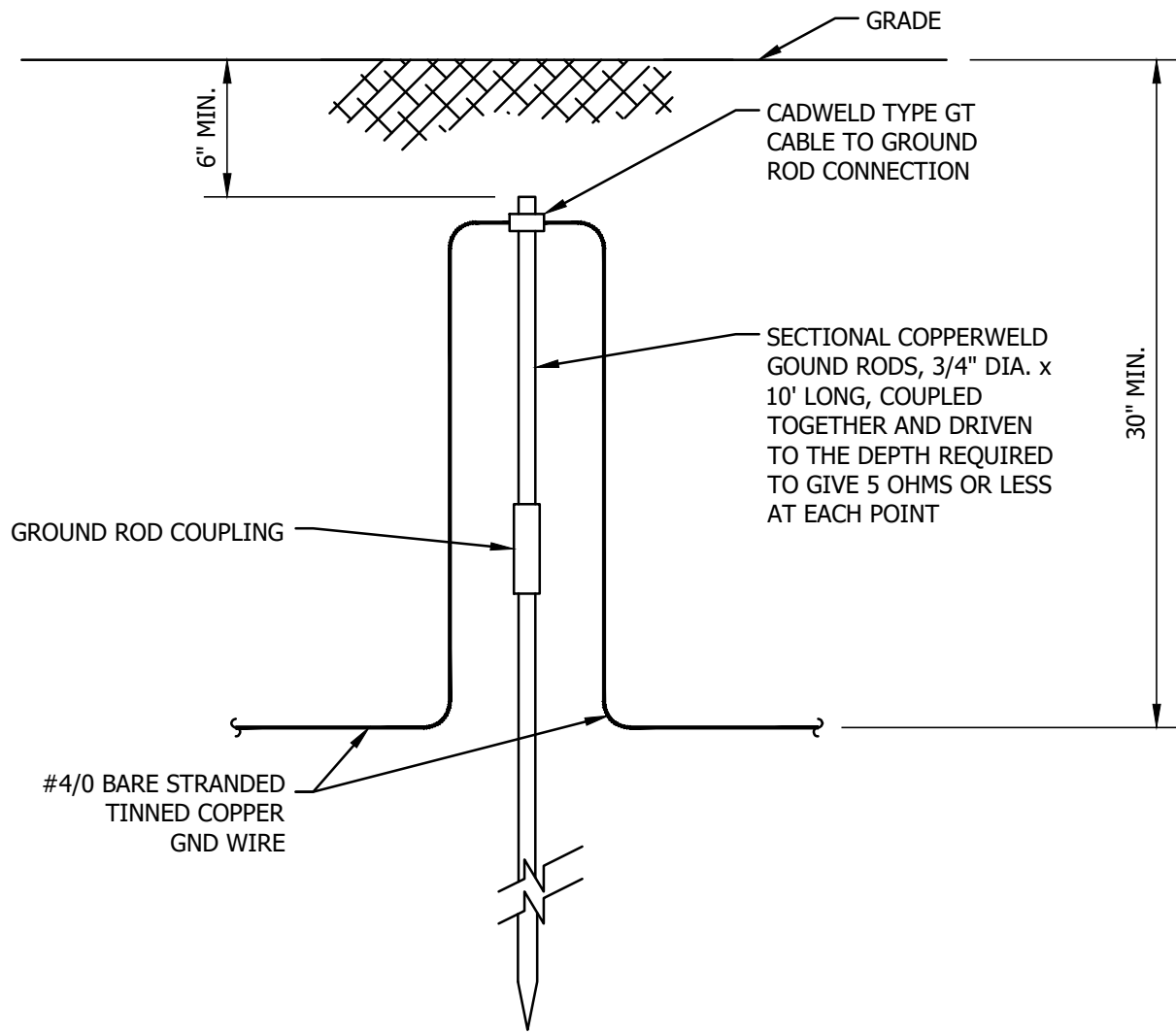


ITEM	QTY.	UNIT	DESCRIPTION
1	A/R	EA	GROUND WELL, 20 1/2" x 13 1/2" x 18", QUIAZITE #PG1118BA18
2	A/R	EA	GROUND WELL COVER, QUIAZITE #PC1118WA00
3	A/R	EA	CONN, GND, ROD, 5/8-3/4-#2/0 SOL-#250 STR (BURNDY #YGL34C29)
4	A/R	FT	WIRE, GND, #4/0 AWG, BARE STRANDED COPPER
5	A/R	EA	ROD, GND, COPPER CLAD, 3/4" DIA x 10' LONG, SECTIONAL
6	A/R	EA	COUPLING, GROUND ROD, SECTIONAL, 3/4"

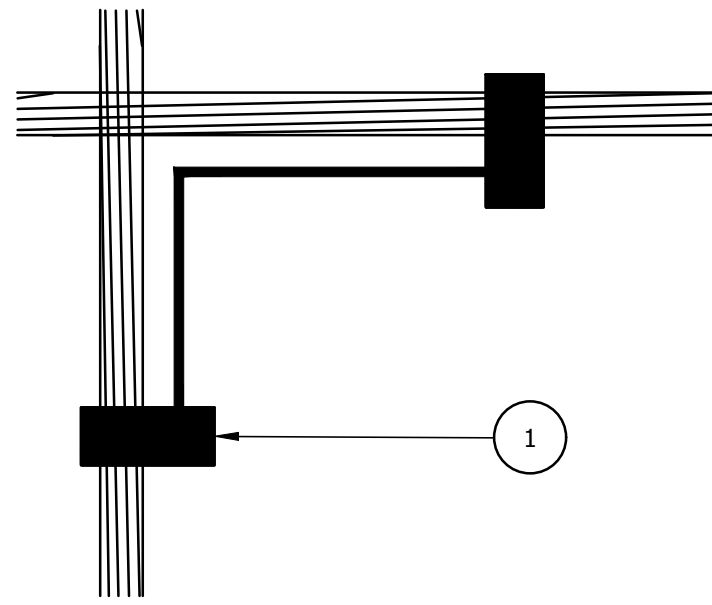


NOTES:
1. TOP OF GROUND TEST WELL TO BE FLUSH WITH FINISHED SURFACE.

ITEM	QTY.	UNIT	DESCRIPTION
1	1	EA	GROUND ROD, 3/4" x 10'-0" LG. COPPERWELD JOSLYN # 38348
2	AS REQ'D	EA	GROUND CONNECTOR - BURNDY # GAR6426
3	1	EA	GROUND ROD CONNECTOR - BURNDY # YGL34C24
4			
5			

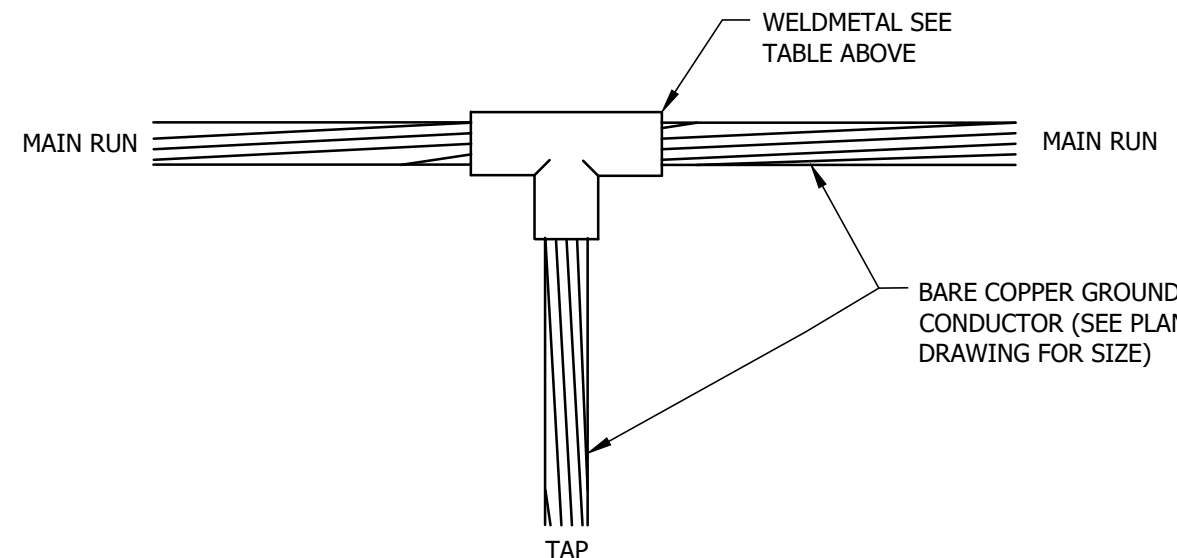


ITEM	QTY.	UNIT	DESCRIPTION
1	1	EA	HYBRID CONNECTOR, BURNDY # YGL29C29

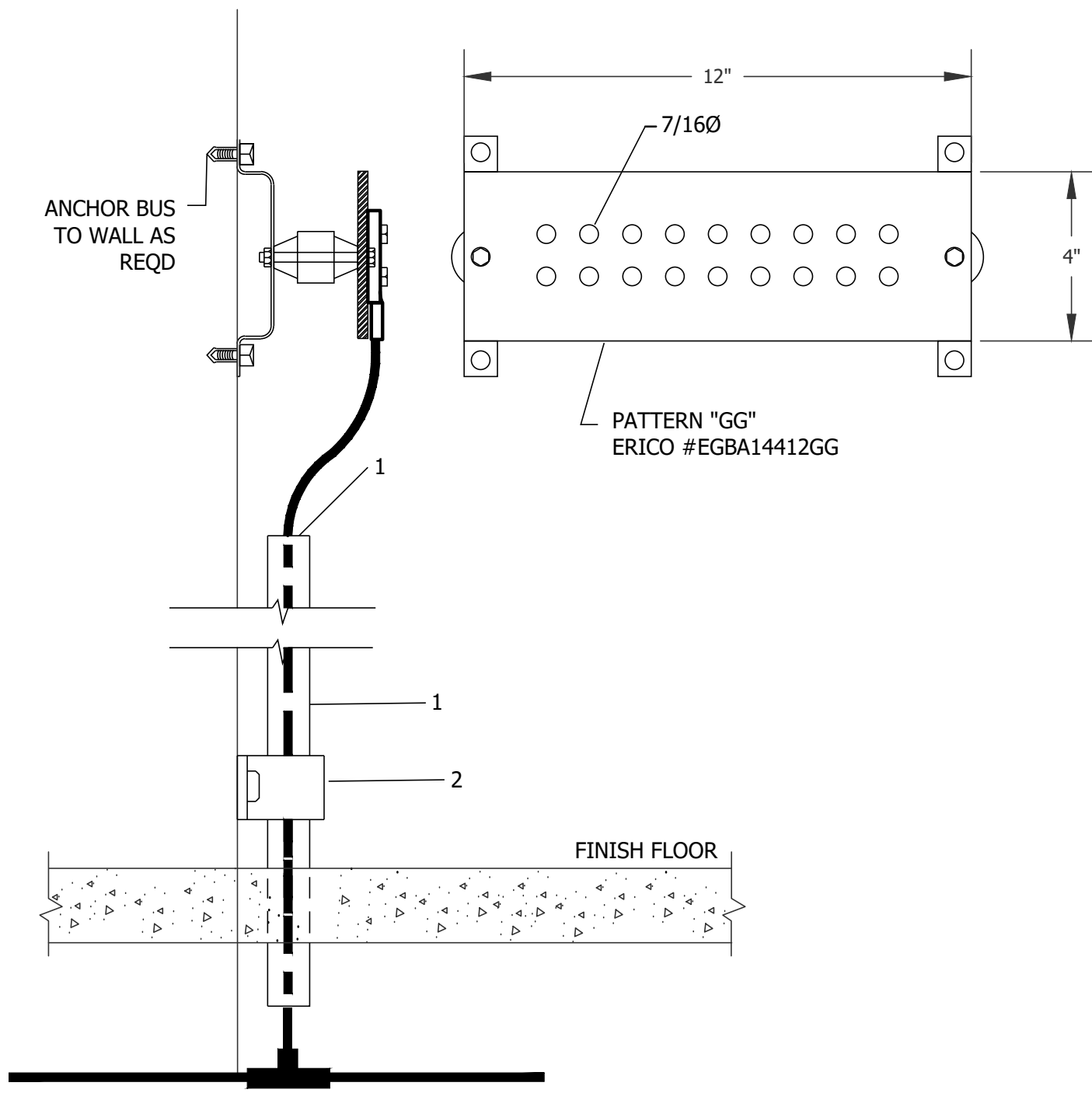


WIRE SIZE		WELD METAL #	CADWELD MOLD #
RUN	TAP		
#4/0	#4/0	250	HDTAC-2Q2Q

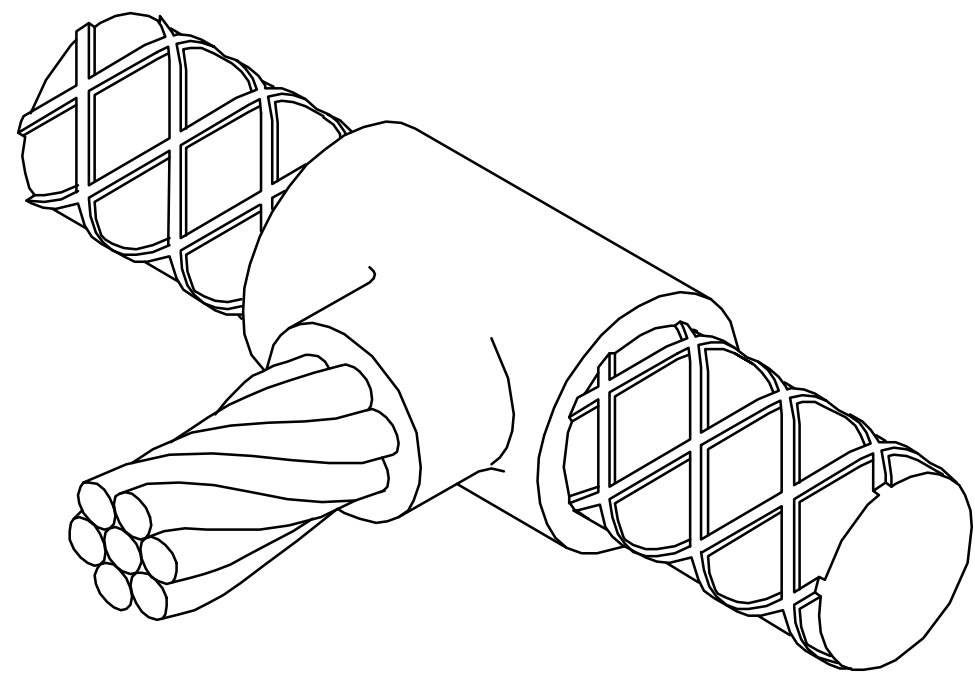
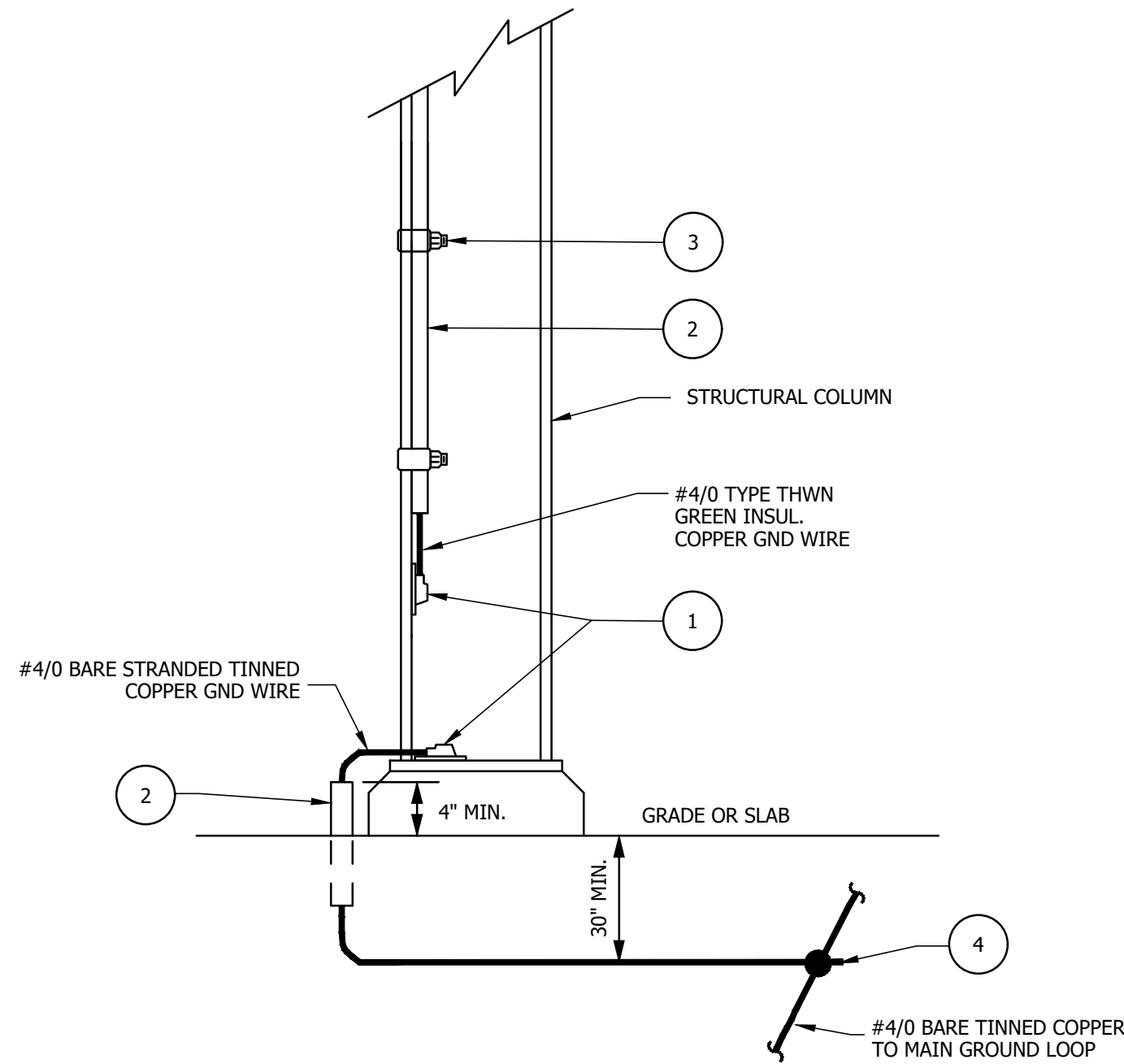
LIST OF MATERIAL FOR ONE INSTALLATION - BY TYPE



ITEM	QTY.	UNIT	DESCRIPTION
1		EA	1" PVC CONDUIT (SEALED WITH SILICON)
2	AS REQ'D	L.F.	1" CONDUIT CLAMP, O-Z #14-100G, CLAMP BACK O-Z #143G, W/CONCRETE ANCHORS



ITEM	QTY.	UNIT	DESCRIPTION
1	2	EA	CADWELD/USE MOLD HSC-2Q WELD METAL #115
2	AS REQ'D	L.F.	1" SCHED 40, PVC SLEEVE W/WATER TIGHT INSULATING RESIN
3	AS REQ'D	EA	PARALLEL CLAMP KORNS # PAR 3/4
4	AS REQ'D	EA	CADWELD TYPE \"TA\" CONNECTION



Title:
AMALGAMATED SUGAR COMPANY EVAPORATOR PROJECT
EVAPORATOR BUILDING
GROUNDING DETAILS

AMALGAMATED SUGAR COMPANY
2320 ORCHARD DRIVE EAST
TWIN FALLS, ID 83301

Date: 2025.05.05
Chkd By: J.MCMURTRY
Dsgn By: B.PENA
Project: E24140
Dwg: E.31
Revision: A

C:\Users\jmcumrty\Documents\Take Home Project\TASCO\E24140 E.30 GROUNDING GRID PLAN.dwg (LAYOUT2)Plotted on: Jun, 13, 2025- 7:05AM by Joe McMurtry